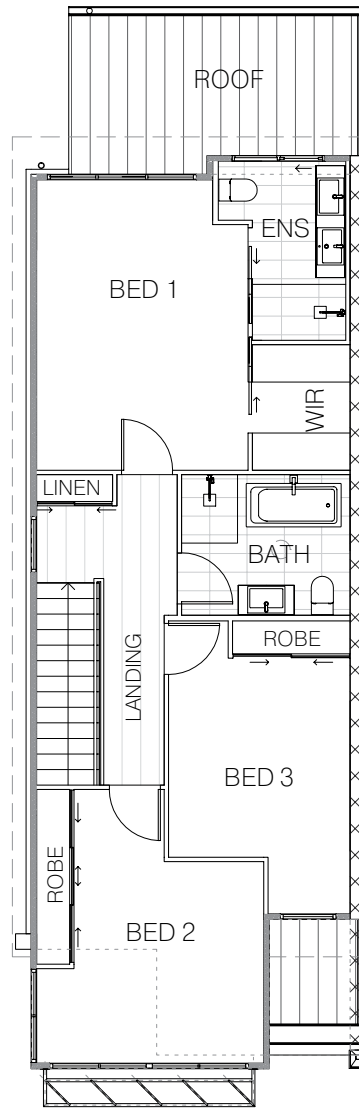


LOWER LEVEL



UPPER LEVEL

3 2.5 1

## FLOOR PLAN

**Townhouse** 10, 11, 12, 13, 14, 15, 16, 17, 18, 19, 20, 21, 22, 23, 24, 25

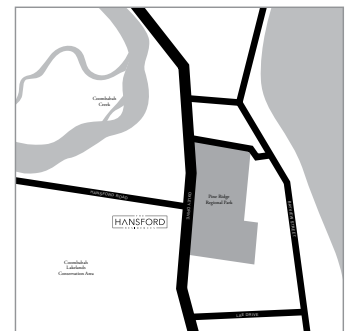
**TYPE E**

**Internal** 118 - 120m<sup>2</sup>

**External** 13 - 14m<sup>2</sup>

**Garage:** 20m<sup>2</sup>

**TOTAL** 151 - 154m<sup>2</sup>



## FINISHES

**WALLS** - SELECTED EXTERIOR WALL CLADDING OFF FOAM PAINTED FINISH | GLAZING | ALUMINIUM | ALUMINIUM COMPOSITE PANEL | AND OTHER FINISHES TO APPROVED BUILDING PLANS **GROUND LEVEL FLOORS** - REINFORCED CONCRETE SLAB TO ENGINEER DETAILS **UPPER FLOORS** - TIMBER CONSTRUCTION **CEILING FINISH** - SUSPENDED PLASTERBOARD AND PAINT FINISH **WINDOWS/EXTERNAL SLIDING DOORS** - ALUMINIUM FRAMED WINDOW AND SLIDING DOOR AS SELECTED BY DEVELOPER **TELEPHONE/DATA** - SELECTED POINTS, LIVING ROOMS AND MASTER BED ROOMS **AIR CONDITIONING** - TYPE E TOWN HOMES ARE SPLIT REVERSE CYCLE AIR CONDITIONING SYSTEM TO LIVING ROOM AND MASTER BEDROOM AS SELECTED BY DEVELOPER, TYPE A, B, C & D TOWN HOMES ARE DUCTED SYSTEM TO ALL BEDROOMS AND LIVING AREAS **LANDSCAPING** - TO LANDSCAPE ARCHITECTS DESIGN, TROPICAL PLANTS AS SELECTED **LETTER BOXES** - 1 X LOCKABLE LETTERBOX PER TOWN HOME LOCATED NEAR THE PROPERTIES ENTRY **FIRE SERVICES** - AS REQUIRED BY NATIONAL CONSTRUCTION CODE ("NCC") **WASTE DISPOSAL** - SUPPLY OF BINS TO GARBAGE AREA, SUPPLY OF RECYCLING BINES AND WASTE MANAGEMENT GENERALLY TO BE RESPONSIBILITY OF BODY CORPORATE **OUTDOOR ENTERTAINING AREA** - OUTDOOR ENTERTAINING AREA AND POOL TO DEVELOPERS DESIGN



UNIONSHARE.COM.AU

Suite 30608, 9 lawson street, Southport, Gold Coast Queensland 4215